






- ▶ Easy to Use and Install
 - ▶ Integrated solution
- ▶ Adaptive Management
 - ▶ Lowest TCO

ManageEngine OpManager

The Complete Enterprise Network Management Software

ManageEngine OpManager is an integrated Network, System, Application and Datacenter monitoring software that offers advanced levels of fault and performance management functionalities. OpManager is an affordable, easy-to-use, easy-to-install tool that works right out-of-the-box.

Beyond Ping...

-  Bring your IT line with your Business by creating **Business Centric Views**
-  Guarantee and Prove availability with **Service Level Dashboards**
-  Configure once and share your **Device and Interface Templates**, or download shared templates created by others
-  Visualize your WAN as a physical entity with the completely web based **Map Maker**
-  Know the real-time health of your networks, systems, business services or infrastructure **At-a-Glance**

Align IT to Business

- Ensure high service availability
- Prove Service Levels
- View Business Level Dashboards

Notification and Reporting

- Alarm Escalation Rules
- Health Reports
- Reports Scheduler
- Event-Alarm Correlation
- SMS Alerts and notifications

Integration

- Integrated ticketing with SDP
- WAN Traffic analysis and WAN Utilization and NetFlow Analyzer

Data Center Management

- Manage servers, UPS, exchange and all data center elements in one console
- Exchange Server Monitoring
- MS SQL Monitoring
- EventLog Monitoring
- UPS Load, charge and performance monitoring

WAN Management

- Visualize your WAN
- Know your WAN availability
- Monitor WAN performance
- Investigate on WAN Utilization
- WAN At-a-Glance reports



Features

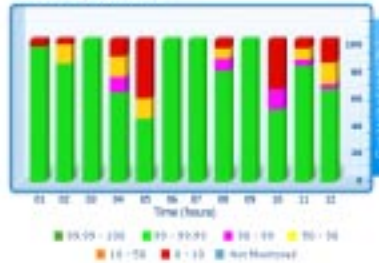
Performance Monitoring

- Over 160 Graphs and 40 reports out-of-the-box
- Monitor Interface traffic, utilization and error statistics
- Monitor CPU, Memory and Disk utilization statistics
- Monitor Availability and Response time statistics
- Get reports on Daily, Weekly, Month and custom period basis
- Proactively identify performance degradations using thresholds
- Export reports into HTML, PDF, CSV formats

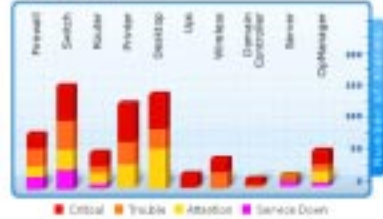
Fault Monitoring

- Intelligent alarm correlation and color coded alarms
- Receive Email / SMS notifications
- Supports SNMP Traps
- Automatically execute self healing scripts/programs when a fault occurs
- Support for acknowledging alarms and adding operator notes
- Automatically escalate critical alarms that are unresolved
- Suppress known or recurring alarms

Availability Distribution



Alarms Graph



“ I see OpManager as a valuable tool to provide complete network system and application monitoring at an affordable price. I found it very user friendly, easy to deploy, and overall a comprehensive network monitoring and management tool.”

- John Jordan, Technical Analyst, ZEDA Limited

“OpManager is a product with high quality of fault and performance management capabilities, at an affordable price. This product proactively manages our network and it is very easy to use”

- Liu Guotao, Senior Manager-IT, Liuhe Tobacco Company of Jiang Su province

“Before deploying OpManager, we had a tough time managing critical devices in our network and now OpManager takes care of almost every thing, I would say our entire network, and this really helps our business to serve our customers better. Keep doing the great work!”

- Umberto Zaccarini, WMGItalia Network

“We tried different network monitoring products and most of them are designed to run on windows. We chose OpManager as it can run on Linux as well as Windows. We also liked the out-of-the-box reports and graphs for availability, utilization and response time.”

- Moktar Kone, System Administrator, MTDS

When it comes to Network Monitoring systems, OpManager is the obvious choice. Excellent value for money, feature rich and integrated to our Service Desk tool. In OpManager we have a great tool which satisfies all our requirements and at an extremely affordable rate!”

- Barry Moore, Australian Aerospace Limited

System requirements :
 Pentium III 998 Mhz, 999 MB RAM,
 200 MB Hard disk space.
 OS supported : Windows 2000/NT/XP,
 Red Hat Linux 7.2 and above

AdventNet Inc,
 5200 Franklin Dr, Suite 115,
 Pleasanton, CA 94588m USA.

Web Site : <http://www.opmanager.com>

For queries on products : sales@adventnet.com,

For tech support : <http://support.opmanager.com>

Toll free : +1- 888 - 725 - 9500